

**Configura<sup>®</sup>Advance**  
by Accora

**Fully adjustable  
comfort chair**

with integrated pressure care  
and postural support

**Accora**





# Configura<sup>®</sup> Advance



Width adjustment from 16" to 22"



Dropdown armrest option – helps with transfers and sling access



Legrest elevation and **BodyMove** technology with 37 degrees of tilt-in-space



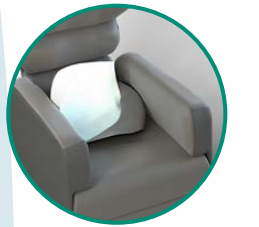
10 degrees of forward tilt



**BodyMove** 'reduced shear' backrest with 130 degree recline



Depth adjustment from 16" to 22"



Seat overlay with interchangeable pressure cushion



Continuous seat overlay for thigh support



Angle adjustable footplate



Height adjustable footplate

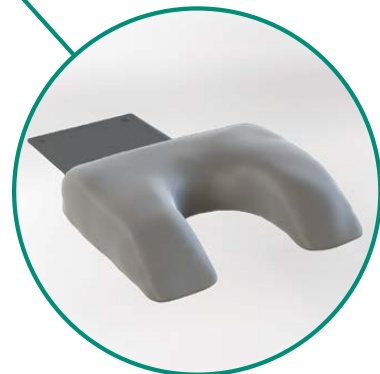
# Optional Postural backrest

All cushions height and depth adjustable

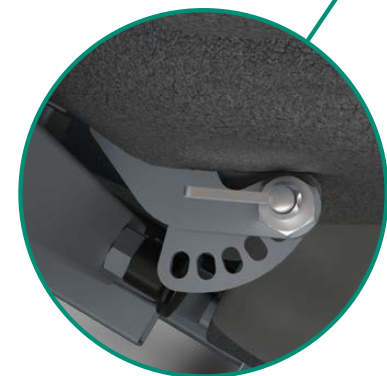
Angle adjustable pillows



Optional lateral supports



Optional profiled headrest



ClickLock – easy-to-adjust bracket for flexible adjustment and positioning of backrest cushions

## BodyMove™

Using unique **BodyMove™** technology, the backrest and legrest of the Advance chair adjust in close alignment to the biomechanics of the human body. This reduces shear forces on the back and legs, improving comfort and posture.



'Reduced shear' recline to help maximise pelvic stability and assist in preventing tissue damage



Fully articulating legrest, giving superior leg elevation and support

# Benefits

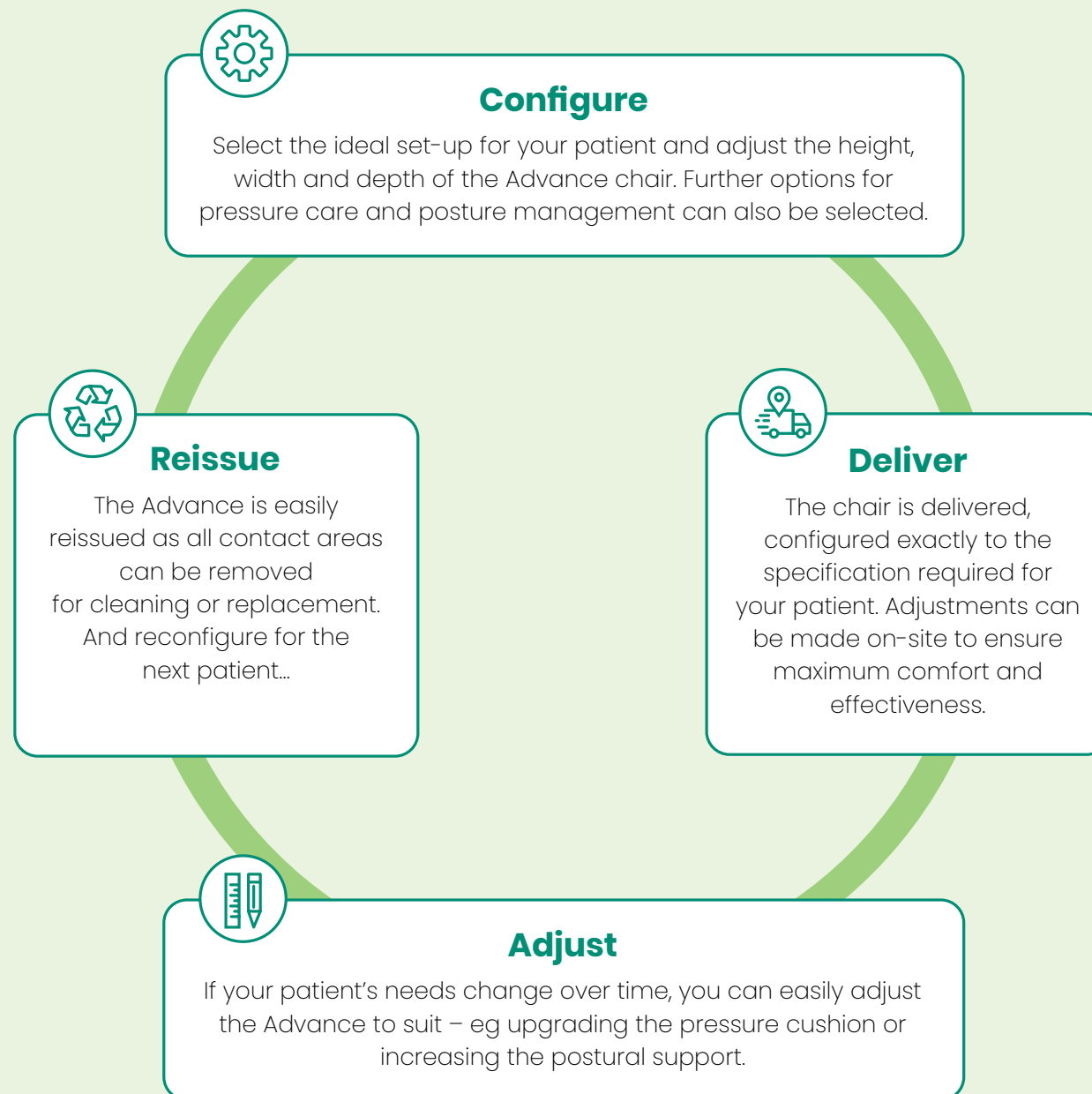
The Configura Advance is a comfort chair suitable for multi-use care environments, with a high level of adjustment for size, pressure and postural requirements.



## User group

The Configura Advance chair is appropriate for:

- Non-ambulant users
- Users with limited knee extension
- Users who need to be transported from room to room
- Moderate postural requirements
- Users up to 352 lbs
- Complex postural requirements, e.g. fixtures and contractures
- Users with stiffness or fixtures at the hips
- Stroke and neurological conditions



## Specific dimensions

Description	Values
Seat height	21"-24"
Seat width	16"-22"
Seat depth	16"-22"
Footplate height adjustment	13"-21"
Armrest height	8" as standard – adjustable with dropdown armrest
Overall width	27"
Overall height – upright	52"
Overall length – without footplate	37"
Overall length – with footplate	51"
Total length fully tilted, reclined and legrest elevated	74"
Tilt-in-space range	7 degrees - 37 degrees
Forward tilt	10 degrees
Backrest recline	130 degrees

CUSTOM MEDICAL SOLUTIONS

To place an order call 866-350-5640 **Accora**

9210 Corporate Blvd. Suite 120, Rockville, MD 20850  
 T: 301 560 2400 E: information@accora.us.com W: accora.us.com

\* and ™ are trademarks of Accora Limited. As our policy is one of continuous improvement, we reserve the right to modify designs without prior notice.

CONADVIBJ003 BRO-SCI-001US Rev 01